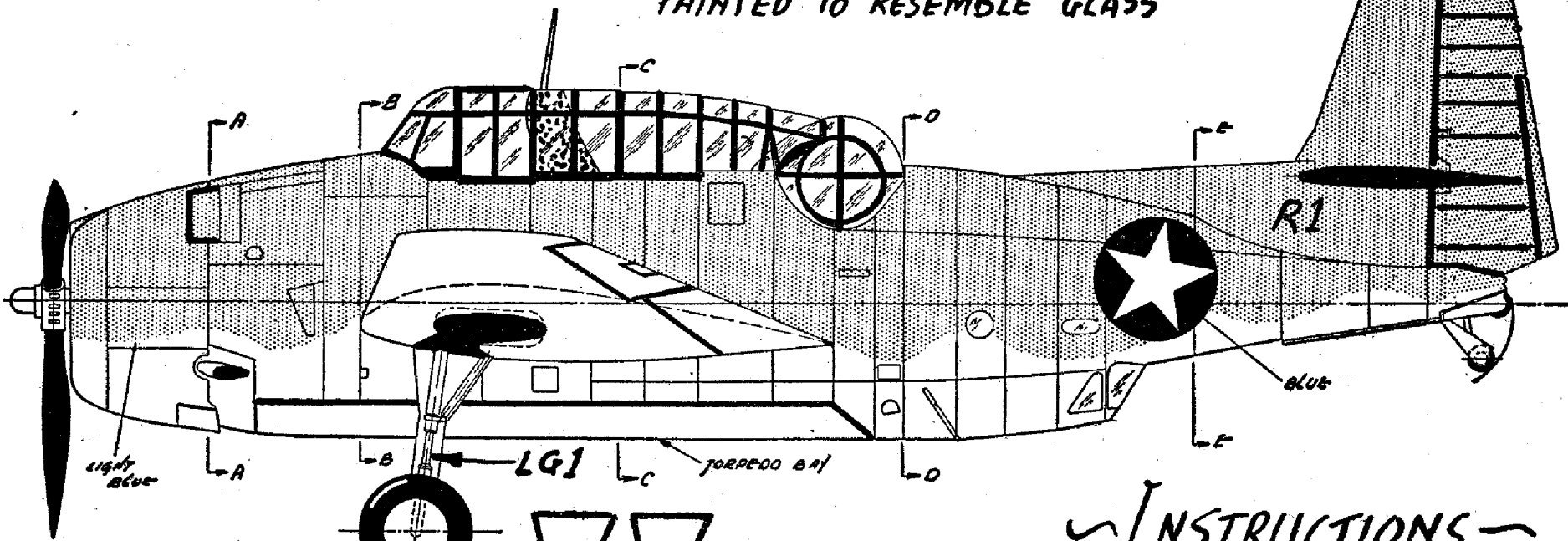


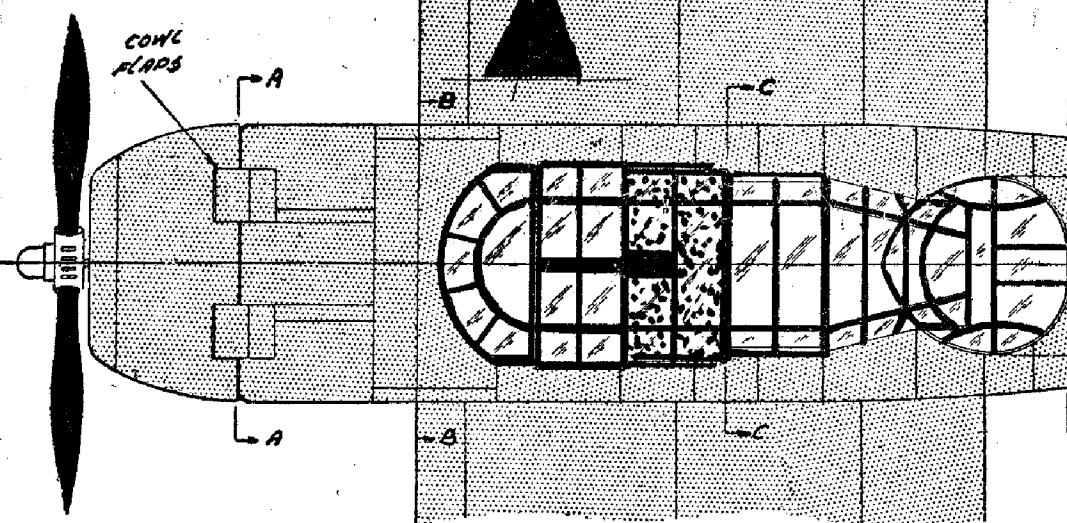
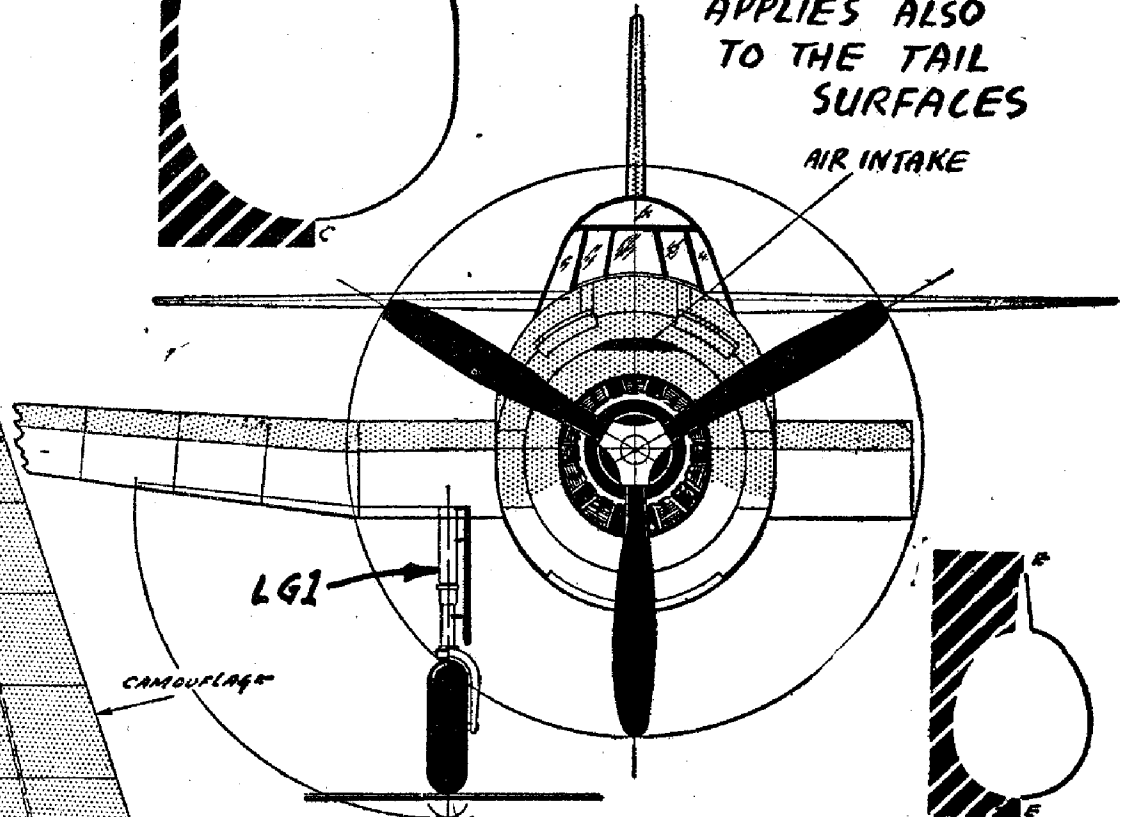
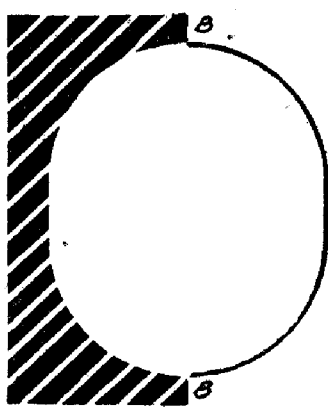
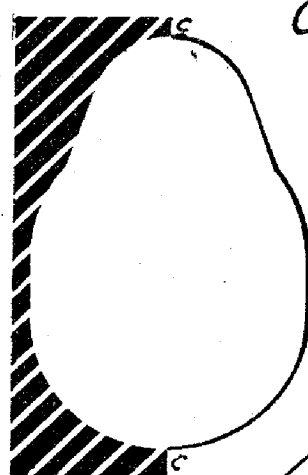
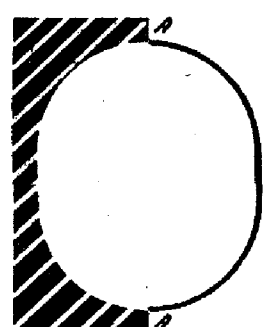
NOTE: COCKPIT IS MADE OF ONE SOLID, SEPARATE PIECE AND PAINTED TO RESEMBLE GLASS



INSTRUCTIONS

GLUE THE COCKPIT-BLOCK IN POSITION AND FINISH SHAPING THE FUSELAGE ACCORDING TO PLAN. SHAPE WINGS TO THE CROSS-SECTION SHOWN. THIS APPLIES ALSO TO THE TAIL SURFACES

LANDING GEAR FLAPS ARE CUT FROM PLAN AND GLUED TO INSIDE OF "LG1"



CROSS-SECTION OF WING



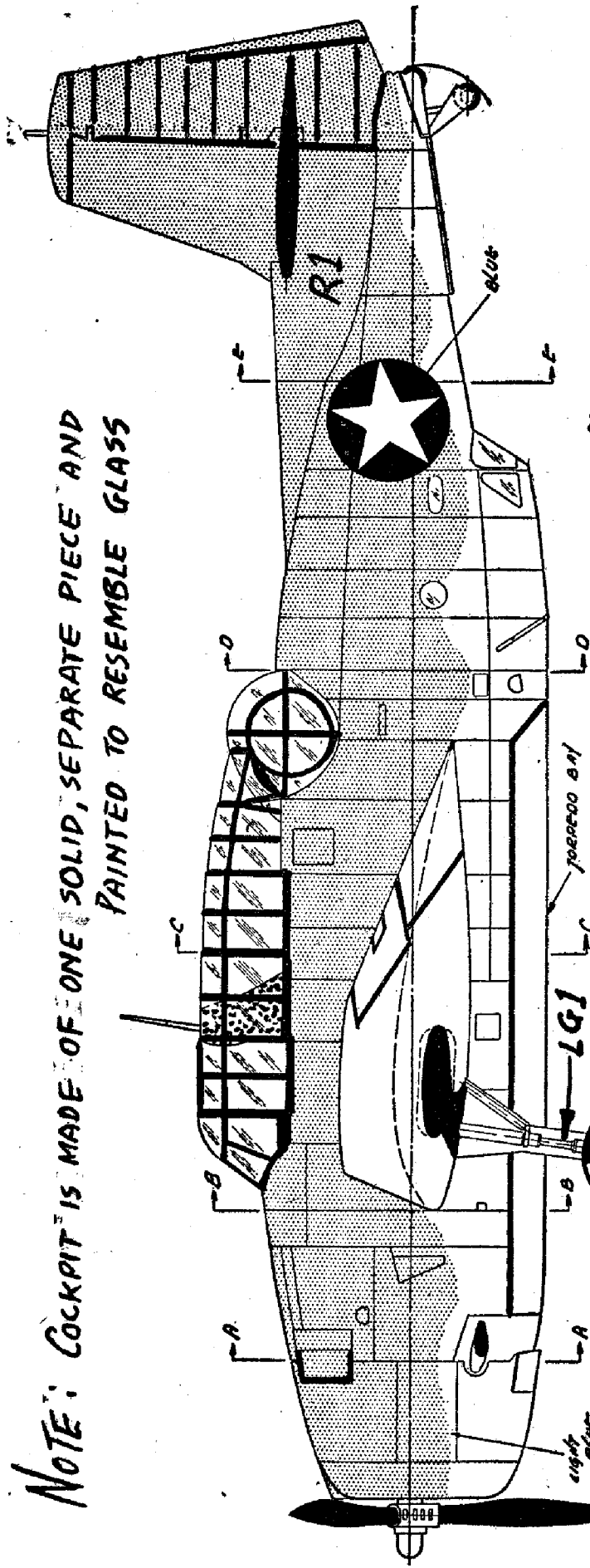
GRUMMAN
TBF-1

the "AVENGER"

EAGLE MODEL AIRCRAFT CO., B'KLYN

COLOR-SCHEME:- ENTIRE BOTTOM PART OF SHIP IS PAINTED LIGHT BLUE, AND TOP IS CAMOUFLAGE. ALL DETAILS ARE DRAWN IN BLACK INK.

NOTE: COCKPIT IS MADE OF ONE SOLID, SEPARATE PIECE AND PAINTED TO RESEMBLE GLASS

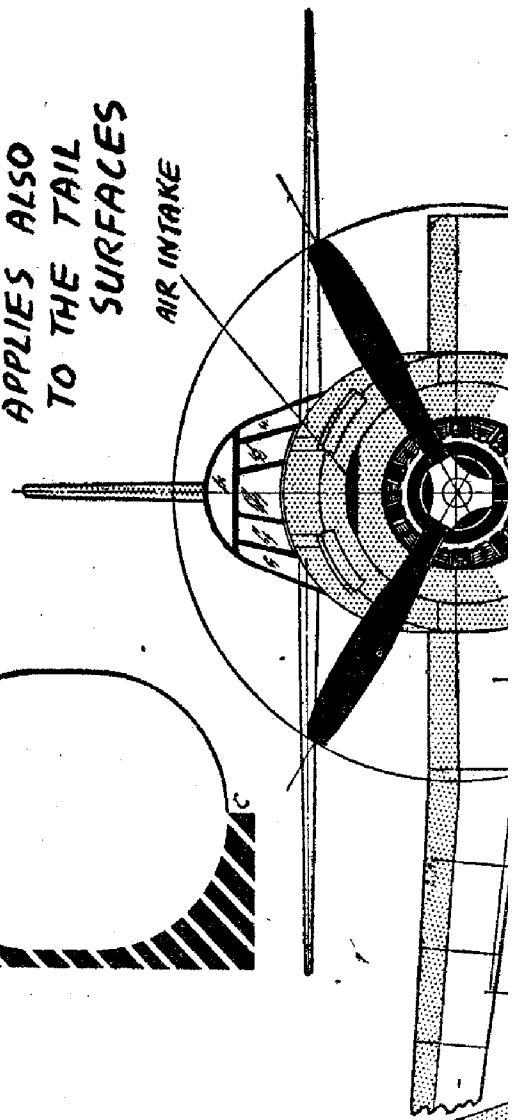
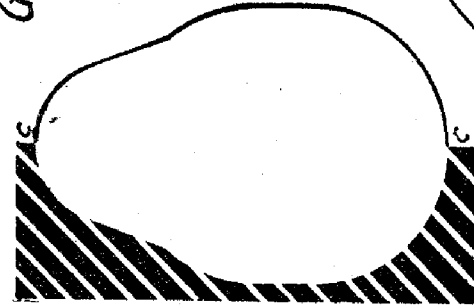


INSTRUCTIONS

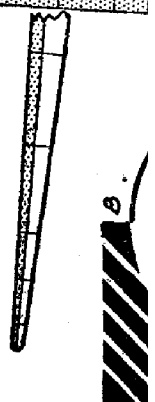
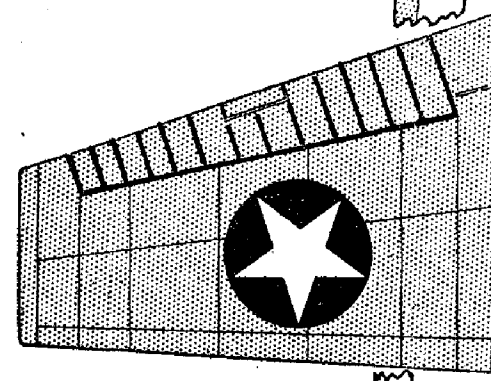
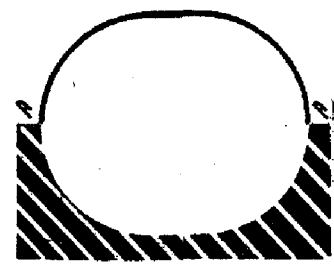
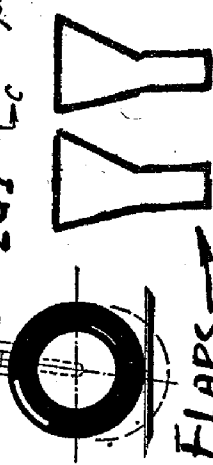
GLUE THE COCKPIT-BLOCK IN POSITION AND FINISH SHAPING TO THE FUSELAGE ACCORDING TO THE PLAN. SHAPE WINGS TO THE CROSS-SECTION SHOWN. THIS

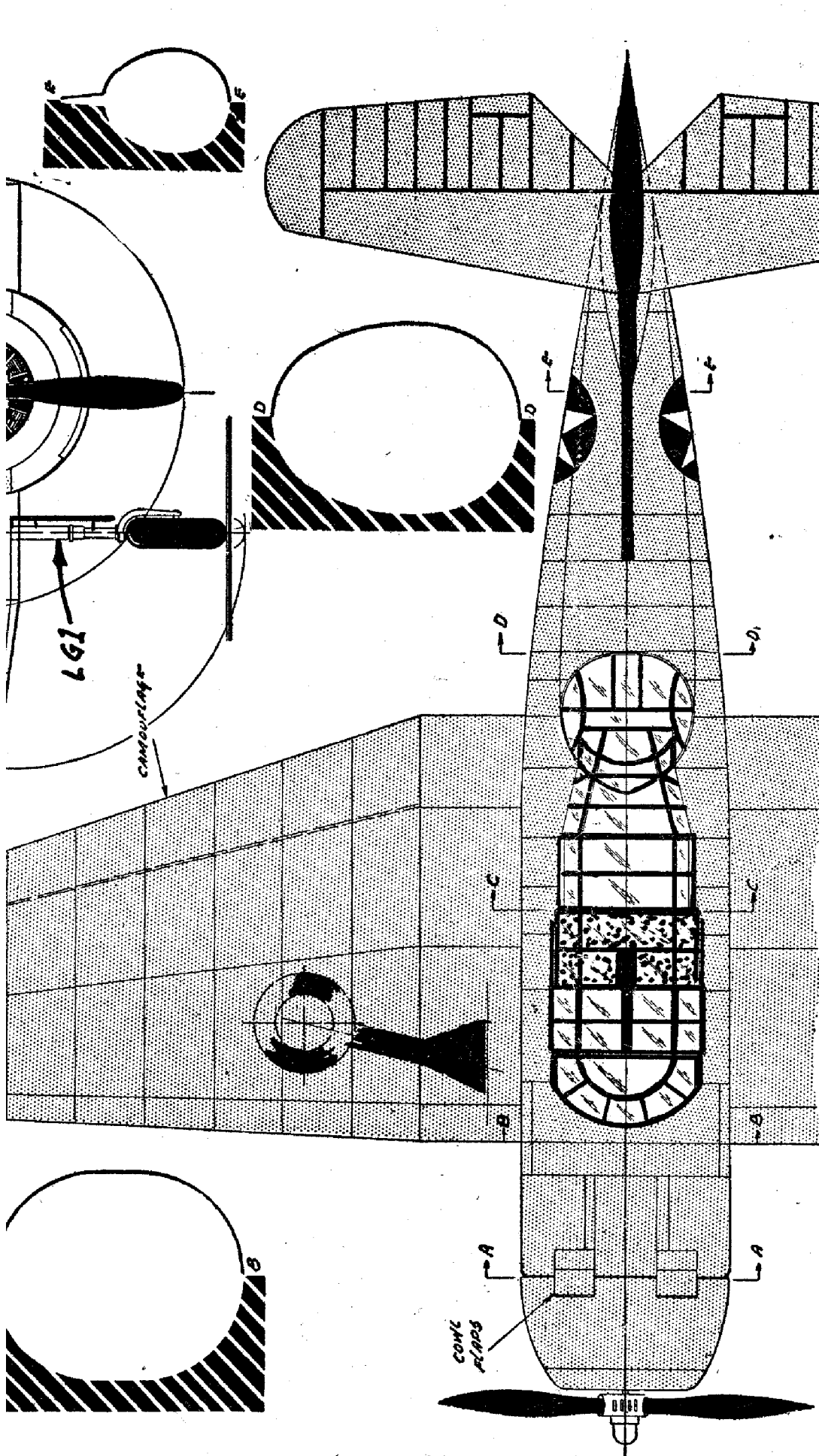
APPLIES ALSO TO THE TAIL SURFACES

AIR INTAKE



LANDING GEAR FLAPS ARE CUT FROM PLAN AND GLUED TO INSIDE OF "LG1"





GRUMMAN

TBF-1

the "AVENGER"

EAGLE MODEL AIRCRAFT CO., B'KLYN



CROSS-SECTION
OF WING →

COLOR-SCHEME:- ENTIRE BOTTOM PART OF SHIP IS PAINTED LIGHT BLUE, AND TOP IS CAMOUFLAGE. ALL DETAILS ARE DRAWN IN BLACK INK.

