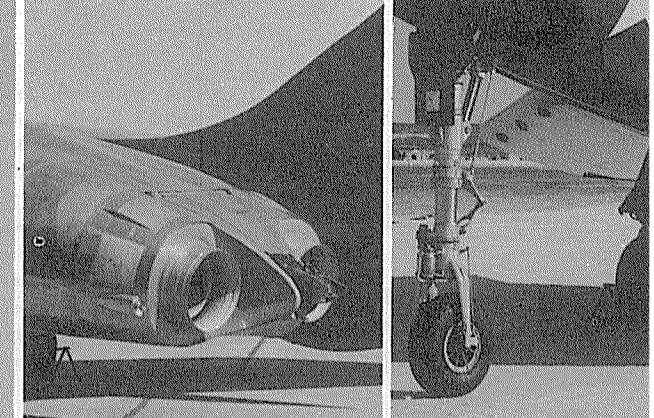


COURTESY CHANCE VOUGHT AIRCRAFT



FOLLOW THE ARROWS 1 2 3 FOR ASSEMBLY SHORTCUTS

1

WHAT YOU DO FIRST

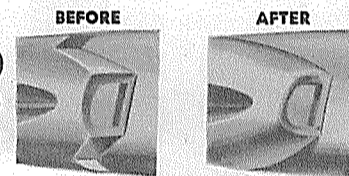
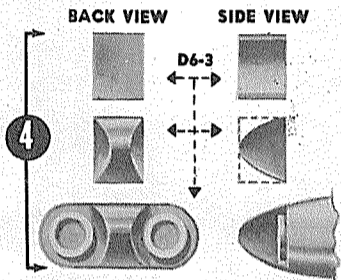
Check the parts, using the Part List below and illustrations or pictures as a guide. If any are missing or damaged, fill out the coupon for replacement. Read instructions quickly to get the "feel" of the job. Try fitting the parts together temporarily to see what sanding will have to be done and what you must glue. No carving tools are needed. Prepare the glue mixture from the envelope provided, following instructions on package. Mix in a jar cover. Don't add too much water. Glue the coarse sandpaper to the small stick. Use to file off rough edges. Use the fine sandpaper to make a smooth finish.



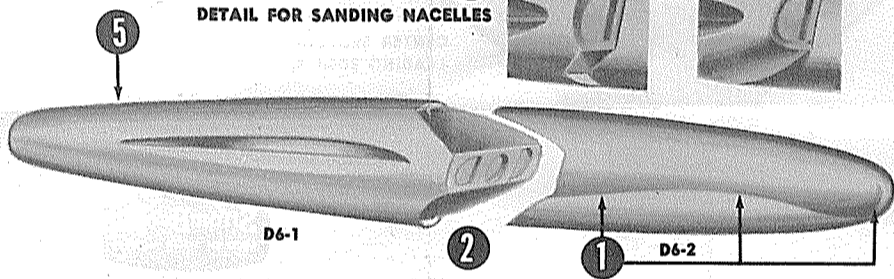
2

TO PREPARE THE FUSELAGE

1. With the coarse sanding stick round over nose of fuselage (D6-2), see 3 view sketch, and sand away the lines on the sides.
2. Glue the front and rear fuselage pieces together. Let dry.
3. Sand away the surplus stock above and below air scoops blending in the curve. (SEE SKETCH)
4. Glue the jet exhaust separator (D6-3) to fuselage. Sand to shape shown in sketches.
5. Sand entire fuselage real smooth with fine sandpaper.



DETAIL FOR SANDING NACELLES



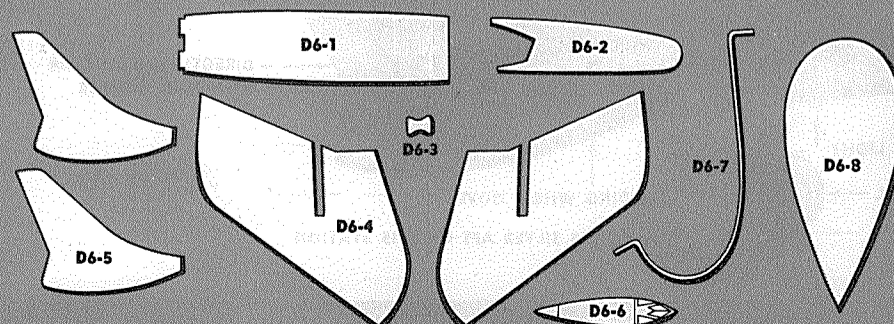
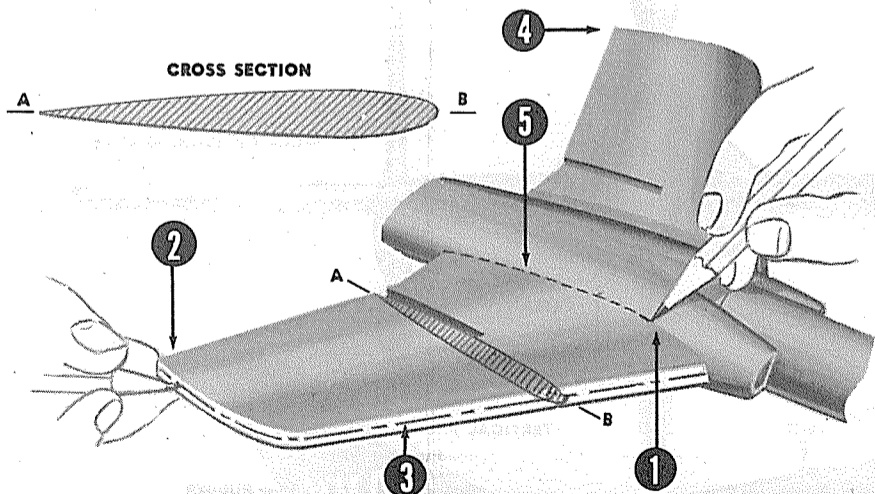
3

TO PREPARE WINGS

1. Test fit wings (D6-4) into fuselage. Draw the outline of the fuselage on wings with a sharp pencil. Sand only as far as these lines when sanding airfoil on wings.
2. Make a pencil line around the edge of the wing at center as shown. Sand to this mark from both top and bottom surfaces.
3. Take the sanding stick and on both wings

round over the leading (front) edge and taper the trailing (back) edge to a thin edge. SEE CROSS SECTION.

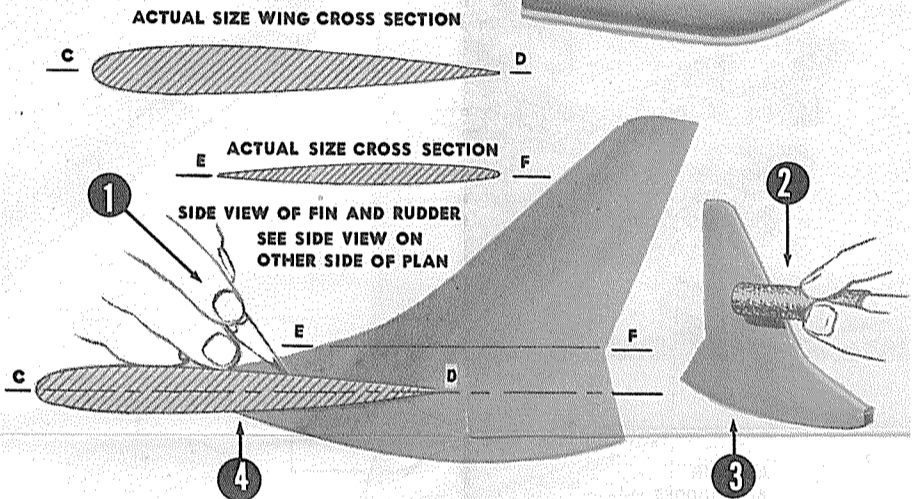
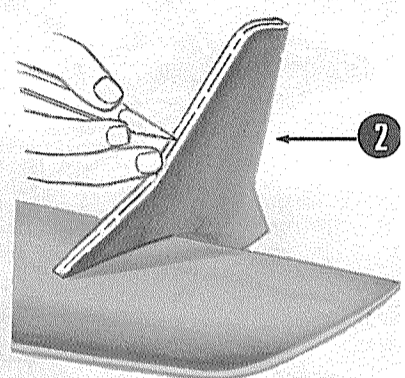
4. Round over the wing tips, top and bottom. Sand entire wing smooth with fine sandpaper.
5. Apply glue to beveled end of wings and press tightly into place in fuselage.



4

TO PREPARE FIN AND RUDDER

1. Test fit fin-rudder (D6-5) in wing. Sand if necessary so it fits freely. Position rudder in wings as shown and mark wing outline on rudder with a sharp pencil.
2. Take coarse sanding stick and round over the leading edge and taper the trailing edge. Sand only to pencil marks. (SEE CROSS SECTION).
3. Round over the bottom edge.
4. Apply glue to slot in wing and sides of rudder and press into place.



5

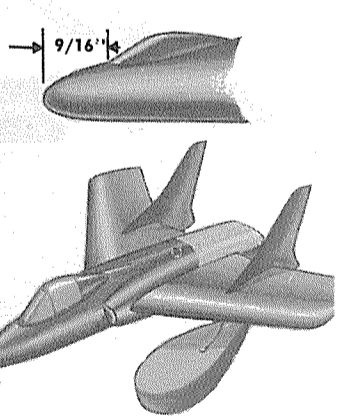
PAINTING YOUR MODEL

Your model will spring to life when you add color. The next step then is to prepare the wood surface with sealer coats. Take a small water color brush and apply several coats of sanding sealer or shellac. Allow plenty of time for each coat to dry and sand entire surface lightly with fine sandpaper between each coat. The color of the real airplane is NAVY BLUE. Rear part of the fuselage is SILVER. Use a blue dope for the entire model including the display base. Take a brush and apply as evenly as you can, as many as three thin coats. Stir the paint often. Allow each coat to dry hard (about 1/2 hour) before applying the next one. Rub the surface between coats with very fine sandpaper. Rub lightly. Do not rub final coat. Apply silver to rear of fuselage last.

6

PLASTIC CANOPY, DECAL TRIM, DISPLAY STAND

1. When paint is thoroughly dry, glue canopy (D6-6) in position as shown.
 2. Apply the transfers in position shown on exploded view.
 3. Assemble wire (D6-7) to base (D6-8) and fuselage. Complete detail of the real airplane is shown in three view drawing on other side. These parts are not furnished with kit such as landing gear, lights, etc. but are shown for your complete information should you desire to make them.
- If you wish to show ailerons, flaps and trim tabs draw lines with India ink or scribe them with a hard pencil.



SEE OTHER SIDE OF PLAN FOR LOCATION OF DECALS

I certify the part checked below was missing () damaged (). (Check which)
Model C49

PRINT CLEARLY

PART NUMBERS AND DESCRIPTION

- | | | |
|--------------------------|------|-----------------------|
| <input type="checkbox"/> | D6-1 | Fuselage (Rear) |
| <input type="checkbox"/> | D6-2 | Fuselage (Front) |
| <input type="checkbox"/> | D6-3 | Jet Exhaust Separator |
| <input type="checkbox"/> | D6-4 | Wing (2 Req'd) |
| <input type="checkbox"/> | D6-5 | Fin-Rudder (2 Req'd) |
| <input type="checkbox"/> | D6-6 | Cockpit Bubble Canopy |
| <input type="checkbox"/> | D6-7 | Display Stand Wire |
| <input type="checkbox"/> | D6-8 | Display Stand Base |

Kit also includes glue, fine sandpaper, coarse sandpaper, sanding stick and 1 sheet of transfers. All sets are full packed. If a part is missing or damaged, fill out coupon and we will replace it free of charge. (Note: Defective decals should accompany your request for replacement of same. Otherwise there will be a charge of 10c for each additional set of decals.)

My Name is _____

Address _____

City _____ Zone _____ State _____

Paste this slip on back of postal card.
Address card to: